

Olympia Art League Newsletter

February 2017

BOARD MEMBERS

President

Roxana Caples

Vice President

Cal Capener

Secretary

Nicki Weber

Treasurer

Tony Lirette

MEETINGS—3rd Thursday of the month

Next Meeting:

February 16, 2017

Location:

Faith Lutheran Church

7075 Pacific Ave SE

Lacey, WA 98503

Time:

6:30 PM Socializing & Art Display
(stands available at the Dollar Store—bring some)

7:00 Business Meeting

7:30 Speaker Demonstration

OLYMPIA
art LEAGUE
Since 1945



OAL's Gay Hoffman demonstrates...

Using 'Color as Value' in the Photo Realism Technique of Portraiture

Gay Hoffman will be demonstrating the Photo Realism technique of portraiture using soft pastels at the February OAL presentation. The topic 'Color as Value' will show how to create a three dimensional look and an accurate likeness of the subject using a photograph as a guide.



Gay Hoffman is an award winning photo-realistic portrait artist who works in a variety of mediums including soft pastel, oil, watercolor, acrylics, stained glass and textiles. She learned to draw at a young age alongside her mother, a residential designer and landscape artist. Gay was president of her high

school art club and earned a Michigan Higher Education full tuition scholarship in art. She trained at the University of Michigan but ended up pursuing a career in computers. She maintained her love of art, however, and over the years has painted privately commissioned portraits and building dedication portraits. Gay teaches soft pastel techniques for South Puget Sound Community College's continuing education program and will begin teaching oil painting techniques in April.



You can visit Gay's Studio on Steamboat Island Road by appointment. Contact her by calling 720-217-9011 or via email: gmariehoffman@gmail.com



"Roxana" by Ed Weber

Hot...Or, Not

Understanding color temperature and learning how to control the temperature of the colors you mix can dramatically improve the quality of your paintings. By controlling temperature you'll be able to create depth and define relationships between different objects and parts of the same object.

What is color temperature? Temperature is the relative warmth or coolness of a color. Yellow or any color with yellow as a predominant component is considered warm. Any blue or color predominantly blue is considered cool. Red is in the middle of the temperature scale, and its temperature is relative to the colors next to it. It's cooler than yellow, but warmer than blue.

When in doubt, you can determine if a color is warm or cool by asking yourself if it has more yellow or more blue in it. When you are determining comparative color temperatures, keep in mind where they would be placed on the color wheel, and their relative proximity to yellow or blue. It's important to remember that warmth or coolness of a hue is not absolute, but it's strongly related to what colors are around it. For example: When you paint red-violet next to red, then the red-violet appears cooler, because it contains some blue. When red-violet is placed next to blue, then the red-violet is perceived as a warm color.

As artists we face the tough challenge of trying to represent a 3D scene on a 2D surface. Even abstract paintings need visual depth. For a successful representation of depth in your painting, remember that warm colors advance and cool colors recede. This is a very important understanding when you are painting distance, but it also applies to close up still life renditions. As you paint add warmer tones to the color where you want it to come forward. Add cooler tones to the areas you want to recede.

Everything painted in yellow or very warm colors will tend to come forward in your painting. If you paint the more distant object yellow it will compete with the foreground and fight to come forward, pushing back any cooler objects in front of it. This conflict confuses the viewer.

Understanding color temperature and learning how to control it while mixing colors is not easy, but once mastered it can make a huge difference in the painting results, adding a professional look to your work.

January speaker...

2

Yuming Zhu Demonstrates Sumi Painting



Olympia Art League members enjoyed watching Yuming Zhu create wonderful Sumi paintings at the January meeting. Yuming, born in China, has always had the drive to create art. He found himself limited while in China in two ways. The first was the very slow growth allowed to a Sumi apprentice; three years grinding ink before being allowed to touch a brush, years of lettering strokes before any Sumi art was taught. Secondly, drawing nude figures would result in imprisonment in China during his youth. Frustration set in and Yuming left China to study Western style art, but returned later to resume Sumi. Now his art is a blend of both styles.



For many of our members this was their first introduction to Sumi art and the materials that are used to create it. Yuming, who frequently teaches workshops for Daniel Smith, is planning a June workshop in Olympia at Diana Fairbank's studio. Learning to think critically and place your brush just once for a powerful stroke is a skill that will enhance any medium and make a more confident artist.

Yuming is based in Woodenville. You can visit his Studio/Gallery by appointment and can contact him by calling 425-749-8703 or via email: zhu@yumingfineart.com

Check out his website--
<http://www.vuminofineart.com/artist/>



OAL EVENING PAINT-IN



Diana Fairbanks' Studio
Thursdays 6:30-8:30PM
1230 E 8th Ave Olympia

For more info contact :
Karen Bush 360-455-8176

"All mediums and people are welcome.
\$5 charged to help pay utilities."



Think Tank Tuesday meets the second Tuesday of each month. The next meeting will be Tuesday, February 14th at 2:00 PM , at Haggen's on Olympia's west side off the intersection of Black Lake and Cooper Point Road.

Roxana will be there to greet and visit. Members are encouraged to socialize, talk art, and think up terrific ideas to make OAL a more amazing art club.

Join us at the ...

Morning Paint Ins

Time: Thursdays 9 AM – Noon

Location: Karen Crate's community club house in Thunderbird Village, 716 Dennis St SE in Tumwater

Bring what you are working on and join other artists at work.

For more information: call or e-mail Karen Crate
wkcrate@comcast.net (360) 943-1827



Water Color Critique Group

Join this helpful, supportive and often inspiring group. Bring a work for gentle, constructive feedback.

Time: The second Friday of each month. This month's meeting is Feb. 10th from 1:00 to 2:30 PM.

Location: Timberline Baptist Church 6628 Mullen Rd SE, Lacey.

Contact: Call or e-mail: Jo Anne Sanford, 360-878-8225
san3jo@comcast.net



Abstract Critique Group

Time: The third Wednesday of each month. This month's meeting is on February 15th from 1 PM to 3:30 PM

Location: Lacey Timberlake Library at 500 College St. SE off Abby Way.

We do a gentle critique of each other's work and share information about classes, books, artists or teachers that have inspired us. All experience levels and mediums welcome.

Contact: For more information about the group contact Linda Selsor at 491-0377 or via e-mail at lselsor@msn.com



This just in...

Pastel Critique Group Forming!!

Come help kick off OAL's newest critique group.

Time: Tuesday, February 7th, 4 PM – 6 PM

Location: Lacey Timberlake Library at 500 College St. SE off Abby Way.

Focus: We'll have a designated topic each month focusing on the 5 Essentials in Every Powerful Painting by Ramon Kelley. Our February meeting is about composition.

Contact: Debra Hanson & Anna Hess are co-facilitating. Contact Debra at 360-259-5713 or via e-mail at debh.dh76@gmail.com

**Chances to strut your stuff...
LOCAL OAL SPONSORED ART VENUES**



New show up...

**Cooper Point
Public House**

Come have a meal at Cooper Point Public House and see the new show that just went up January 31st. This show's theme is all about spring and flowers.

Cooper Point Public House is located at 3002 Harrison Ave. on Olympia's West side. If you have questions please contact Rick Drescher phone: 360-786-1958 or via E-mail: rickartist@gmail.com



**TRA Medical
Imaging**

The Women's Health Center at TRA Medical Imaging of Olympia on Lilly Road offers space for display of OAL member art. This lovely venue works well for large pieces and sculpture. A new hanging went up January 25th. If you would like to show your art, contact Jan Hansen at 360-352-2751 or at justjansue@gmail.com. TRA is located at 500 Lilly Road NE Suite 160 (opposite St Peter Hospital).



**New Art This Month
Capitol Chiropractor
1728 State Ave NE, Olympia**

The new show is going up at Capitol Chiropractor (near Ralph's Thriftway). There's still time to include a work in the show. The switch out will be between 3:30 and 4:30 on **Thursday, Feb. 2nd**.

Come pick up your artwork. If you'd like to be included in the new show contact **Lone Moody** at lmood@comcast.net or 360-357-5249.

New Show at Bonsai Wok Teriyaki

Bonsai Wok Teriyaki offers the entire restaurant for display of OAL member art. The restaurant is located in Tumwater at 408 Cleveland Ave. SE. New works went up Sat. Jan. 28th. Please thank our generous sponsor by taking your family to eat at Bonsai Wok Teriyaki.

Contact Anne-Marie Brown if you want to participate at the next art refresh: (360) 867-3270 or via e-mail at anniebrownie123@yahoo.com

OAL ONLINE GALLERY UP AND RUNNING

To share your work online, send [Rick Drescher](mailto:rick.drescher@oal.org) three of your favorite works and an artist statement of no more than 150 words. Include your website or Facebook page in the artist statement.

Send all information to Rick Drescher at rickartist@gmail.com. Contact Rick if you have questions or need more information.

“Don't think about making art, just get it done. Let everyone else decide if it's good or bad, whether they love it or hate it. While they are deciding, make even more art.”

Andy Warhol



**OLYMPIA
WATERCOLOR
CLASSES WITH
ANN BRECKON**

Painting Around the Color Wheel

Mondays: Feb. 13th & 27th from 12 – 3 PM

Cost: \$35 per session

Location: First Christian Church at 8th & Franklin, Olympia

Themes: Each month we will take one of the 12 colors on the color wheel and study its varieties, available pigments, uses, complements, and combinations while painting a variety of subject matter.

“Students of all experience levels welcome”

To register: Call or e-mail Ann at 425-644-4245 or annbreckon@gmail.com



**CAL CAPENER
OIL PAINTING
CLASSES**

Newcomers, beginners and advanced students welcome!

Time: Saturday, February 18th 9 – 3:30 PM (half hour break for lunch)

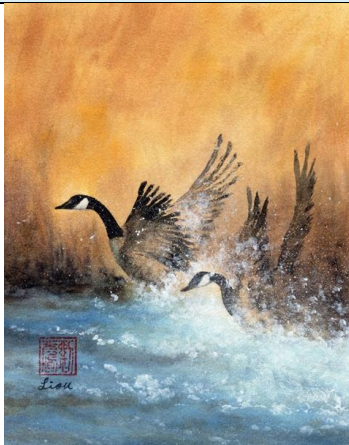
Cost: \$60 with your own materials --\$65 if you use Cal's

Focus: The focus will be on mountains and foregrounds. We'll also cover color mixing, composition, and brushwork.

Location: Class is held at the Diane Fairbank's Studio, 1230 8th Ave., S.E. Olympia.

Contact: Call Cal at 360-491-0704 to register or contact him by email at: cccnac@msn.com

OAL Member Kudos and Shows...



Alice Liou has a solo show of her watercolors up in the sanctuary at Olympia Unitarian Universalist Congregation located at 2315 Division St NW, Olympia.

You can visit the show during office hours, 11 – 4 Tuesday – Thursday.



Colleen Glasletter (above left) presenting her painting to Alaska Airlines. Her painting hangs in the CEO's office at the company's headquarters in Sea-Tac. Colleen has a close connection to the airline as her son and son-in-law are pilots for the carrier.

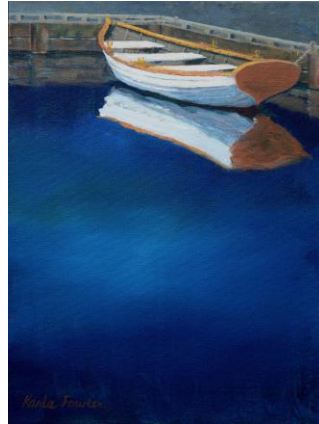


There's still time to catch Lois Beck, Mia Schulte, and Becky Knold's Show: **The Ways We See** Show Up Through March 14th

"If I create from the heart, nearly everything works; if from the head, almost nothing."

Marc Chagall

GETTING ACQUAINTED... Each month we'll feature several of our members as a way to help get to know one another. If you'd like to be featured, contact Nicki Weber at (360)753-3040 or ednickweber@aol.com



Karla Fowler is an acrylic artist specializing in Pacific Northwest marine subjects. She gets endless inspiration from the Puget Sound and coastal waterfront places she and her husband Chuck visit. Her paintings and collages feature vintage tugboats, beach scenes, wooden rowing and fishing boats, coastal seascapes, and colorful shells. She has been represented in several juried art shows, and has had two of her paintings chosen for the 2012 and 2014 Foss Maritime calendars. Having retired as of August 1st from her demanding position as Community Relations and Environmental Policy Director for the LOTT Clean Water Alliance, she is now able to enthusiastically devote much more time to her painting. Karla is a member of the American Association of Marine Artists and joined the Olympia Art League three years ago. She can be reached at nwnxart@comcast.net.



Debra Hanson is a soft pastel and acrylics artist who loves to do iconography (religious images), florals and landscapes. Deb has been a member of OAL for only two months and is already participating in our monthly meetings and Think Tank Tuesdays. She also enjoys jewelry making, creating many inspiring pieces. Prior to moving here she enrolled in several drawing classes and is now taking pastel lessons from our very own member, Gay Hoffman at South Puget Sound Community College. Debra is co-facilitator of OAL's new Pastel Critique Group.



MARCH NEWSLETTER DEADLINE

Please send your articles, photos,
announcements & ideas to:

Linda Selsor at lselsor@msn.com

Due Date: February 20, 2017



NEWS RELEASE

City of Olympia | Capital of Washington State

Registration forms available for Spring Arts Walk 2017

Registration forms for artists and downtown businesses participating in Spring Arts Walk are now available:

- In person at The Olympia Center, 222 Columbia St. NW,
- Online at olympiawa.gov/artswalk (NEW! Fillable form!)
- Or by calling Olympia Parks, Arts & Recreation at 360.753.8380

Early Bird registration deadline is Saturday, February 4, and the standard registration deadline is Saturday, February 11, 2017. Sponsored by Olympia Parks, Arts & Recreation and the Olympia Arts Commission, Arts Walk attracts over 15,000 visitors to celebrate the arts in downtown Olympia. Spring Arts Walk dates are Friday, April 28, 5-10 p.m., and Saturday, April 29, 12-8 p.m.

SHELTON CIVIC CENTER ROTATING ART GALLERY



CALL FOR ARTISTS

City Of Shelton Arts Commission

Entry Deadline: 2/17/17

Dates of gallery display: 3/1/17 - 5/31/17

Contact
Mark Ziegler
City of Shelton Arts Commission
525 West Cota St.
Shelton, WA 98584
(360) 432-5194
mziegler@ci.shelton.wa.us

Don't miss the...

OLYMPIA ART LEAGUE

Members Only Show

February 1st – 28th

Olympics West

Senior Living Community

929 Trosper Rd SW, Olympia

*Stop by and vote for your favorite!
(Ballots available at the front desk)*

Then join us **Wed., Feb. 22** at 5 PM
for the **Meet the Artists Reception**,
where we'll announce the winner!

OAL members at play...

From the evening paint in



Karen Bush



Lone Moody



Anne-Marie Brown



John Luxton



Jan Hansen



Dave Ross



Marilou Powers Doerflinger





Board/Committee Members

President: Roxana Caples
 Vice President: Cal Capener
 Secretary: Nicki Weber
 Treasurer: Tony Linette
 Directors at Large: Rita Parten, Cora Eklund
 Newsletter: Linda Selsor
 Proof Readers: Karen Crate, Cynthia Walker
 E-mails: Roxana Caples
 Greeters: Nicki Weber, Jane King
 Name Tags: April Works
 Membership Data: Jo Anne Sanford, Lone Moody
 Publicity: Trisha Gooch
 Phone Reminders: Jean Van Doren
 Programs: Roxana Caples
 Refreshments: Kay Tolles, Teresa Cowley
 Meeting Set Up: Mike Scheurich, John Luxton
 Website Gallery Coordinator: Rick Drescher
 Website: Christi McGinley (non-member)
 Members Only Art Show: Heather Simons, Lindsey Ford, Dotti Wilke
 Community Outreach: Teresa Crowley, Jean Van Doren
 OAL Juried Show: Roxana Caples, Trisha Gooch
 Art Tours: Jean Van Doren
 Fair Art Show: Diana Fairbanks
 Local OAL Art Show Venues:
Bonsai: Anne-Marie Brown
Capitol Chiropractic: Lone Moody
Cooper Point Public House: Rick Drescher
TRA Medical Imaging: Jan Hansen
 Paint Out: Jane King, Jo Anne Sanford
 Paint In Day: Karen Crate
 Paint In Night: Karen Bush
 Recruiter: Roxana Caples



MEMBERSHIP RENEWAL

If you haven't renewed your membership for 2017, please consider doing that today. Your support through our low membership dues enables us to offer the fabulous programming we enjoy at general meetings as well as other activities. Please mail your \$30 check to: Olympia Art League, PO Box 404, Olympia, WA 98507. You can also bring it to the next meeting. **New members welcome!!**



ArtsWalk 2017

Juried Art Show
 Call for Artists' Entries

DEADLINE FOR SUBMISSION
 March 17, 2017

PROSPECTUS AT:
www.olympiaartleague.com

Show location
April 28 - April 29, 2017
 Olympia Community Center
 222 Columbia St NW
 Olympia, WA



Keep up on art happenings in Olympia...

Subscribe to Stephanie Johnson's **ART DIGEST** for upcoming local events. To join her e-mail list write to her at City of Olympia:
sjohns1@ci.olympia.wa.us

Olympia Art League Newsletter
 "An official publication of the Olympia Art League"

Editor: Linda Selsor
 Contributors: Members of the Olympia Art League
 Copyright 2017 Olympia Art League, Olympia WA