

April OAL Monthly Meeting Presenter is Dano Carver



Olympia Art League is excited to announce that Dano Carver will be presenting a demonstration on the process of creating a painting of an antique car from start to finish—something similar to the paintings in this motif: <https://www.danocreative.com/portfolio/fine-art/paintings/cars/>. As part of the presentation Dano will share his artistic philosophy, how he plans the composition, materials and tools he uses, and his unique techniques with acrylics. The Art League's monthly meeting is on April 20th at 6:30 p.m. We begin by sharing our art and socializing. At 7:00 p.m. OAL business and announcement are followed by our guest speaker presentation. The meeting is held at the Lacey Community Center.

Dano's Bio:

Working from his home in Lacey, WA, Dano Carver is a marketing and creative professional by day, and an artist by night and weekends. Dano's journey as a painter began about 15 years ago when he started working with acrylics. His primary painting style is contemporary realism, but increasingly his work combines realistic subjects with surrealistic and abstract forms. Dano's work is characterized by his use of different techniques to create contrast in texture and color. His paintings often delve into nostalgia, drawing inspiration from the periods of the 1940s and '50s. His subjects range from vintage-style portraits and old rusty cars to more traditional subjects like flowers, fish, and birds. He received degrees in Multimedia and Business from Everett Community College and Seattle Pacific University, respectively. He is a member of the Olympia Art League and has been actively involved for three years. Learn more about Dano and explore his work at [danocreative.com](https://www.danocreative.com) and follow him on Instagram at [instagram.com/danocreative](https://www.instagram.com/danocreative).



The Lacey Community Center is located at Woodland Creek Community Park, 6729 Pacific Ave. S.E. Lacey, WA. The monthly meeting will also be broadcast via Zoom, which will allow people to come to the Lacey Center or stay at home and attend via Zoom if preferred.

Bring your paintings to share at the Community Center and/or send photos of your art work to Cynthia Walker at clwalker@comcast.net by April 15th to have your work included in the PowerPoint presentation.

President's Message

The Olympia Art League has exciting events heading your way in the next couple of months.

The OAL ArtWalk Juried Show will be taking place April 24th through the 29th at the Olympia Community Center. Hopefully, everyone that wanted to enter got their artwork submitted in time. For the event to take place, we need volunteers. Please contact Roxie Caples at roxanaples@comcast.net if you can help.

The Barn Nursery has invited us back for an Art Festival, May 6th and 7th, 10:00-5:00 at 9510 Hwy 99 SE Olympia, WA. They are not asking for an entry fee or a commission on sales. It just doesn't get any better than this! Space is limited inside. Plenty of space is available outside. Smaller art is recommended such as cards, prints and any smaller artwork pieces.

Our OAL Silent Auction is coming up on May 20th. It will be held at the Lacey Community Center 6729 Pacific Ave. Olympia, WA. Start getting your donations together. Art supplies, books, easels. etc. Proceeds of course will all go to OAL. We will have a lot of fun and hopefully bring in a lot of money for the Art League. Don't miss it and bring your friends! See page four of this newsletter for more information.

Sherrie Balko-Nation, OAL Vice President, has met with Tumwater Parks representative. She is moving forward with an OAL art show during the Tumwater Fall Festival in September. It will tentatively be hung at the Tumwater Library. Sherrie has another meeting in April. She will keep us abreast of everything as she finds out more. Sounds like a new art show is on its way!

Jean Stewart and Jane King have their Paint Out Schedule ready for everyone. See more about this on page four of this newsletter. Hard copies of the schedule will be available at the April meeting.

The board visited the Olympia Armory. They have a lot of big plans on the table and a lot of work to do. The OAL board will stay in touch with their progress. The board is presently discussing a possible art festival there. Let us know your thoughts on that idea.

It's officially spring.
Get out and paint!

Heather McDougall



GETTING ACQUAINTED

Introducing- Jennifer Livingston



Hello!

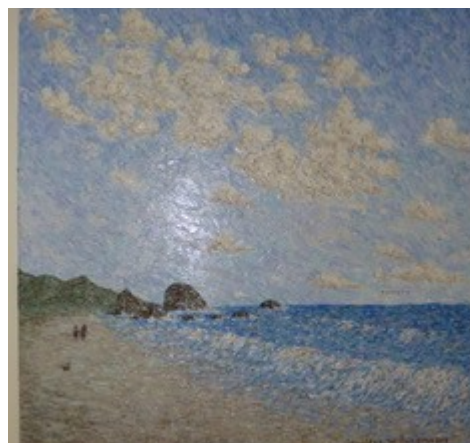
I'm Jennifer Livingston, a one-month OAL member. I'm originally from Fairbanks, Alaska. Olympia has been my home for 30+ years. I retired a few years ago. It's wonderful to have more time in my studio.

I mostly work/play with acrylic paint on cradled board. I also use spun polyester (Lutradur) that I paint, stitch, and burn. I like to paint skies and water, with an impressionist style. The dynamic skies of Washington always inspire me.

I'm a self-taught painter with no gallery or website (yet). I'm inspired by the "Course in Miracles," which teaches that we are all eternal, creative spirits with forever to be joyful (and paint and play!)

I hope to meet and learn from the talented members of OAL.

- Contributed
by Lindsey
Ford





March's OAL Meeting With Roy Lowry and Guest Speaker Review



Roy Lowry was our featured speaker for the March OAL monthly meeting. He is a well-known and local watercolorist, and he gave us a great demonstration using watercolor. His theme was clamdiggers at the beach. He captured the spirit and atmosphere of razor clam digging on the Washington coast. He said, "I never was a threat to razor clams."

He primarily uses Winsor-Newton watercolors. His basic palette is five colors: Winsor Yellow, Cerulean Blue, Burnt Sienna, Prussian Blue, and Alizarin Crimson. He feels this palette provides many hues and is very useful for landscape painting. He also uses a Simmons synthetic brush, and a round palette he can hold in his hand. The paper is Arches 140lb watercolor paper, which he has used for years. Techniques he suggested included practicing breathing. He said, "sometimes it helps to hold your breath, especially when you paint straight lines." He recommends using simple lines and shapes to avoid overworking a painting and to remember to paint reflective light for the figures and shadows near or on water.

The painting for the demonstration featured six figures in different positions and colors of clothing using clam shovels. His technique was wet on dry to start. You place one layer of paint on the paper and allow it to dry, and then you paint on the top of the first dried layer. The bottom layer is dry, and the top layer is wet, so that's why it's called wet on dry! He based his painting on a photo he had taken, adjusting the figures and colors as needed for the best composition.

Initially he painted the horizontal plane using Burnt Sienna, Windsor Yellow, and Cerulean Blue in 3 bands across the paper, gradating the colors to provide a good transition in color. Moving to the area for the beach, he used wet into wet and used lighter colors. Wet into wet is a watercolor technique that uses wet paint against wet paint or wet paper. It's used to allow the watercolor paint to spread and blend. Because the beach will reflect the sky colors, he painted Cerulean Blue using a vertical stroke that was thick and thin, varying the length and breadth of the stroke to create the shimmer of water. To make the sandy color he mixed Alizarin Crimson, Prussian Blue, and Burnt Sienna to make a greyish color. He lets the paint soak into the paper to help control the bleed. To create the waves, he used Prussian Blue sparingly at a slight angle on the horizon. Using the same stroke used to create sky reflections, he used Prussian Blue to paint the shadows of the figures on the beach. The people were digging during the low tide, so the sand was wet and reflected the light and shadow.

When painting people, he said, "remember less is more." Use simple shapes, basic colors, slightly elongate the legs, no details on the face, and simple shapes for the hands and torso. Use lighter colors to show the light source on the figures. As the figures move into the distance use smaller simplified shapes, avoid details, and use the same color for all their clothing to help them recede into the background. Figures in the foreground were delineated as shapes in different sizes and positions to denote the individuals, Burnt Sienna was used for the skin, and the color of clothing varied. For example, the closest figure had a dusty red jacket shaped like the torso, with a lighter red on the right-hand side to show the light source. Medium brown was chosen for the pants and a lighter shade on the right side for the light source. Dark green was used for the shovel. Another figure had denim pants with a dark blue jacket, again showing the light source. No details on the face, just a simple shape. Hands were also a simple shape. As the figures moved into the background, they became simpler shapes, and darker colors.

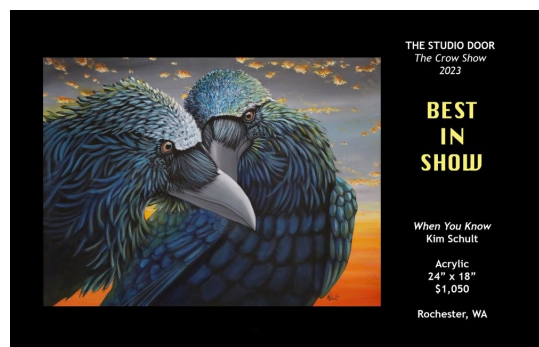
Roy's demonstration was enjoyable and very helpful. He showed the photo the painting was based on, and where he made changes to suit the painting. His instructions were clear and demonstrated his mastery of watercolor techniques.

Contributed by Deborah Cornett



Kudos

Kim Schult entered three paintings into "The Crow Show" at The Studio Door in San Diego. All three were accepted and she got her first "Best In Show!" Congratulations Kim.



Olympia Art League Silent Auction

Mark May 18th on your calendars so you will not forget to attend Olympia Art League's May monthly meeting, which is our Silent Auction. By now you have done a little spring cleaning and set aside art books and supplies that are no longer appropriate to the art you are producing.

Donations should be in good condition. Some artist's will be donating a mini-workshop. If you are comfortable sharing your art skills you might consider offering a class. Art easels, books, paper cutters, brushes and paints are good. Frames and mat board do not sell well. Please do not include your own art as we don't want to discount your artistic value!

We are looking forward to another adventurous silent auction for our May General Meeting. Thank you in advance for making this meeting a fun and prosperous event. Because we will be using all the space for our auction we will not be sharing art before the meeting begins nor will we be showing our monthly PowerPoint art.

Here is how we expect the auction to go....

You will arrive between 6:30 - 6:45 with your donations in hand. As you enter you will be given a set of numbers for each bid item you brought. One number will be placed on your item and one on the bid sheet that goes with it. You will place the item and bid sheet together on one of the center tables.

At 7:00 we will open the bidding. We will bid on items until 7:45 and then bids will stop. At this point, we will gather in the back for a regular business meeting while auction helpers gather the bid sheets. Sheets will be grouped alphabetically by winning bidder names.

At 8:15 we will pay for our bid items. Please bring checks or cash. After you have paid you may gather your treasures and head for home.

Olympia Art League 2023 Paint Out

Join other OAL members May through September painting or sketching in fun and beautiful local places. This year each session will start at 10 a.m. and we will plan to meet at 12:30 as a group for a gentle optional critique and to share our work, concluding about 1:00 p.m. The schedule for May is as follows:

MAY 18 - THE ALBEE HOUSE - 1928 Overhulse RD NW, Olympia. Drive West on Harrison Ave. Turn right onto Overhulse RD NW (just before the Highway 101 overpass). Turn right on 20th Lane NW and take a right into pasture parking. View trees, gardens, arbors, and animals.

MAY 25 - LATTIN'S CIDER MILL - 9402 Rich RD SE, Olympia. I-5 South to Tumwater Blvd. Go left over freeway to Capitol Blvd. Turn right and go 3 miles past Olympia Airport to Rich RD SE. Turn left at Rich Road, drive six tenths of a mile to Lattin's, on the right.

Tips for success:

- Dress in layers - it's better to stay warm and de-layer, if needed.
- Pack light - only bring what you can carry comfortably, small is good; at some locations you can paint out of your hatchback, if you have one.
- Bring a snack and something to drink.
- Put a gallon jug of water and a lightweight stool or camp chair in your car at the beginning of the season. (Not every location will have convenient seating, or seating where you want to paint.) or carry your gear in a 5-gallon bucket you could use as a stool.
- Plan work at a size and level of detail for the time available.
- Focus on the POSITIVE.

The purposes of our group are to encourage painting outside, enjoy local beauty, support and encourage each other, and to have fun.

Here is a link to the schedule. Copy and paste it into your browser if it does not work by clicking:

<https://www.olympiaartleague.com/paint-outs-paint-ins>

Questions? Contact Jean Stewart 360-463-2997 or Jane King 360-522-3765

TRA Venue

Olympia Art League hangs member art at TRA in Olympia. Two artists currently showing at this venue are John Wein and Divina Clark. Their art will be on display until May 17th when the art will be changed and members that would like to share their art can bring their pieces in. Watch for emails from OAL in early May for details.



Fourth Avenue Women Group

Birdie O'Neil's "Fourth Avenue Women" group is starting on Monday, April 24th at 6:30 PM.

Points of Interest are:

- Theme is Mixed Media Abstract Expression.
- Each meeting the discussion will be briefly about a work or an artist represented in the book "Women of Abstract Expressionism" by Irving Sandler.
- Bring any work that's in progress or finished, discoveries that you'd like to share, or just bring yourself! No formalities; this is cozy, curious conversation.

Please reach out to Birdie directly if you are interested in attending: olybirdie@gmail.com or 504-419-9286



Pastel Group Leader: We are in need of a lead for the Pastel Monthly Group. Contact Lorna Sheveland at lsheve@comcast.net if you are interested in doing this. Lorna will inform you what the job entails.

Abstract Group Leader: We are in need of a lead for the Abstract Monthly Group. Contact Linda Selsor at lselsor@msn.com if you are interested in doing this. Linda will inform you what the job entails.

Oil Group Leader: We would like to start up an Oil Medium Monthly Group. If you are interested in doing this, contact Heather McDougall. Her contact information is below.

Drawing Group Leader: Anyone interested in starting up our Drawing Group again and would consider being a group leader, please contact Heather McDougall. Her contact information is below.

Program Chair: Arrange monthly OAL presentations

Please, consider volunteering,
Heather McDougall OAL Acting President
Contact: 360-742-4667
2stannheather@gmail.com

Think Tank Tuesday

Think Tank is the second Tuesday at 2:00 p.m. at Hagen's Grocery on the westside. All are welcome to attend. Put your thinking caps on and join us to socialize, talk art, and think up terrific ideas to make OAL a more amazing art club.

**DEADLINE FOR THE MAY 2023
NEWSLETTER IS SATURDAY
APRIL 22, 2023.**

Please send your kudos, photos, announcements and ideas for the **NEXT** newsletter to Terri Johnson via email—mtjpublishers@msn.com. If you have questions give Terri a call or text at (360) 280-4617

OAL Artist Support Groups

Join one of OAL's support groups. Bring a work for gentle, constructive feedback and try your hand at the month's challenge. We also talk about classes, books, artists or teachers that have inspired us. All experience levels are welcome. All mediums are welcome in the Abstract Group. Regular meeting times are listed below. Check in with the contact person to get more information about the group you are interested in. If you are an Olympia Art League member, watch for emails for group reminders.

Abstract Group

Date & Time: Meets the *third Monday* of each month. We are going back to in person meetings. The next meeting is April 17th from 1:30 to 3:00 PM at the Lacey Fire Station, 6500 Mullen Road SE.

Contact: Linda Selsor via email at lselsor@msn.com for questions or if you would like to be added to the group list.

The challenge for April is "using metallic paint in your Creation."

All mediums, beginners and curiosity seekers are welcome. Join us and bring your challenge and another painting to share.



Shown: March "turquoise" challenge by Deborah Cornett entitled "Strips."

Watercolor Group

Date & Time: Meets the *second Friday* of each month. The next meeting is April 14th from 1:00 to 2:30 PM at the Lacey Fire Station, 6500 Mullen Road SE. Those confined to Zoom only, may use our Forever Zoom Room at the same day and time we meet at the Fire Station.

Contact: Heather McDougall at 2stannheather@gmail.com for questions.

The challenge for April is "contrast."

Shown: March "repetition" challenge by Terri Johnson.



Acrylic Group

Date & Time: Meets the *fourth Friday* of each month. We are going back to in person meetings. The next meeting is April 28th from 1:00 to 2:30 PM at the Lacey Fire Station, 6500 Mullen Road SE.

Contact: Karla Fowler at nwnxart@comcast.net for questions.

The challenge for April is "shadows."

Shown: March "snow" challenge on left by Anne-Marie Brown and on right by Margaret Lord.



Thursday's Paint Group

Paint-In with Karen Crate
Come paint with others every Thursday 9:00 -12:00
at Thunderbird Village
706/716 Dennis St. SE, space 10, Tumwater, WA
Brickfront building
American flag and mail boxes

Any questions call Karen Crate 360-943-1827
wkcrate@comcast.net

OAL Board & Activity Leads

Acting President: Heather McDougall

Acting Vice President: Sherie Balko-Nation

Secretary: Anne-Marie Brown

Treasurer: April Works

Members at Large: Karla Fowler,
Jan Hansen

Communications Chair: Ruth Bravetti

Graphic Designer: Jan Hansen

Membership Chair: Lindsey Ford

Newsletter Editor: Terri Johnson

Nominating Committee: Dennis Gough,
Veronica Kessler & Annabel Kirschner

PowerPoint: Cynthia Walker &
Terri Johnson

Program Chair:

Zoom Masters: Melissa Ward,
Terri Johnson

Web Master: Veronica Kessler

Web Master Backup: April Works

Juried Show Mentor: Roxana Caples

OAL Sponsored Shows:

Members Only Art Show: Sherie Balko-Nation, Karen Bush, Birdie O'Neil

Arts Walk Juried Show: Collette Mason, Kathleen Guest, Roxana Caples

County Fair Art Show: Dann Morris, Dennis Gough, Terri Johnson

New Venues Chair: Jennifer Livingston

OAL Local Art Show Venues:

Bonsai Wok: Anne-Marie Brown

TRA Medical Imaging: Jan Hansen

Painting Get Togethers:

Paint-Out Day: Jean Stewart &

Jane King

Paint-Out Night For Summer:

Karen Bush

Paint-In Night: Karen Bush

Paint-In Day: Karen Crate

Support Groups:

Abstract: Linda Selsor

Acrylic: Karla Fowler

Pastel :

Watercolor: Heather McDougall

Put the PLAY Factor Back into Your Artmaking.

Learn to recognize your intuitive voice as it takes you in new directions. Each session adds a new mixed media painting technique to your repertoire, pushing the boundaries of inks and acrylics, adding textures, collage, and more. Meditation and writing are added to the mix to evoke that powerful Muse energy!

All experience levels, beginners to advanced, are welcome.

Six weekly classes and each week an all-new lesson. This season will feature new textures, image transfers, Wabi Sabi effects and acrylic skins. Here's a sampling!

For more information about this please email <http://susancornelis.com/>



Olympia Art League Newsletter

"An official publication of the Olympia Art League"

Editor: Terri Johnson

Contributors: Members of the Olympia Art League

Copyright 2023 Olympia Art League, Olympia WA